

# Avant Garde

... for regeneration and prevention, anti-aging, well-being, sleep quality and relaxation.



# NOTE

## Dear Customer

We are pleased that you have chosen our AIRNERGY+ device and hope that you enjoy it and find it beneficial!

To always guarantee flawless functioning, the AIRNERGY+ devices are made of high quality material and with meticulous care. Please read this User Manual carefully. Pay particular attention to the "safty instructions" sections. Keep this User Manual for future reference and please pass it on to any future owners of the device.

## The following symbols are used in the text:



ISO 7000-0434A

### Safety instructions

(Failure to observe the safety instructions next to this symbol could result in harm to people or to the device itself.)



### Advice and practical tips

---

 This User Manual contains information for different AIRNERGY+ models. Please note that the images used might differ from your device. Instructions refering to one particular model are marked with the name of the device.

---

Standard reference:      The following standards are applied in this User Manual:  
IEC 60601-1, IEC 60601-1-1, IEC 60601-1-2, IEC 60601-1-4, IEC 60601-1-6, IEC 60601-1-11

This User Manual is subject to copyright held by Airnergy AG and may not be used, duplicated or transferred in full or in part without explicit written permission.

V7a / 19.08.2016

# CONTENTS

1. Important information .....	4
2. Directions for use .....	5
3. Starting up the device .....	6
4. Manual of the device .....	8
4.1. Turning on the device and starting normal operation	9
4.2. Adjusting the application time	9
4.3. Adjusting the intensity	9
4.4. Storing the application time and intensity settings	9
4.5. Starting the application	10
4.6. Stopping the application	10
4.7. Interrupting the application time (pause)	10
4.8. Application time has expired or was stopped	10
4.9. Switching off the device	10
4.10. Automatic shut down	10
4.11. Continuous application	11
5. Service functions .....	12
5.1. Display the air filter operating time	12
5.2. Maximum air filter operating time reached (after 50 hours)	12
5.3. Changing the air filter (after 50 hours)	12
5.4. Reminder: "Service-Check 2000" due in 50 hours	13
5.5. Warning: "Service-Check 2000" now due	13
5.6. Selecting language	13
5.7. Setting acoustic signal volume	14
5.8. Error messages	14
5.9. Troubleshooting list (fault diagnosis)	15
6. Looking after the device .....	16
7. Service-Check 2000 .....	18
8. Technical data: Device .....	18
9. Technical data: Power supply .....	18
10. Accessories .....	19
11. ISO-Certificates .....	20

# 1. IMPORTANT INFORMATION

## Only use the device:

- > for its intended purpose
- > if it is in full working order

In case of malfunctions that could compromise safety, please inform your local distributor or Airnergy AG immediately.

## **Transport and storage:**

Check the transport packaging of the device for any damage. In the event of any damage during transit, notify either Airnergy AG or your local distributor immediately. We recommend that you keep the original packaging for subsequent transportation.

## **Important:**

The device is only to be operated with the supplied mains adaptor "100-240V AC/50-60Hz" from the company "FRIWO Gerätebau GmbH" or any devices that have been approved in writing by Airnergy AG. The device should only be operated with 12 V DC at the device input.

In order to ensure safe disconnection from the mains supply in accordance with DIN EN 60601-1 first of all disconnect the charger plug from the device and then pull the mains plug out of the wall socket.

Please read through the User Manual carefully before starting up the device and comply with any local rules and regulations!

## **Warranty:**

The warranty is valid for a period of two years from the date of invoice and covers material and production faults (excluding glass parts) as well as the electronic function of the device, provided that it has been used as directed and maintained accordingly.

The warranty is invalidated, if the device is opened (damage or removal of the warranty seal) or tampered with.

## **Appropriate use of the device:**

Airnergy devices will be used for inhalation of physical conditioned ambient air only to improve the regularization ability of autonomic nervous system by means of commercial respiratory nasal cannulas. The Airnergy AG takes no responsibility for any abuse or misuse!

Protect the device from excessive heat (max. 40°C) and atmospheric humidity (max. 90%). Avoid exposure to direct sunlight to prevent discolouration of the case.

The device may only be opened by Airnergy AG specialists.

## 2. DIRECTIONS FOR USE

### **i** Directions and recommendations for use

You can inhale AIRNERGY+ one or more times a day (min. 3x per week).

We recommend an application time of 21 minutes at 100% intensity.

After this application time the pump continues to operate for approximately 1 minute to remove residual moisture from the system. The device then automatically switches to Operational Mode.

### **Risks and side effects – please read carefully before using for the first time!**

When using AIRNERGY+ no foreign substances are inhaled into the body and consequently no serious risks or adverse side-effects are to be expected.

In particular cases (e. g. people who are seriously ill or have a tendency to severe allergic reactions), treatment should be commenced with a short application and then gradually increased according to how well it is tolerated.

People who are sensitive to the smell of the material of the nasal cannula can inhale without using it. To do so, position yourself directly in front of the outlet air nozzle.

### **Possible reversible adverse effects at the start of application:**

- difficulty getting to sleep when device is used in the evening
- a feeling of tiredness

These symptoms abate as the treatment is continued and are completely reversible.

### **Children under 12 years of age**

Since there is as yet insufficient feed-back, you should only use AIRNERGY+ for children under 12 years of age after consulting their doctor. Children under 12 must use the children's nasal cannula. This is available as a special accessory from the manufacturer.

### **Pregnancy and breastfeeding**

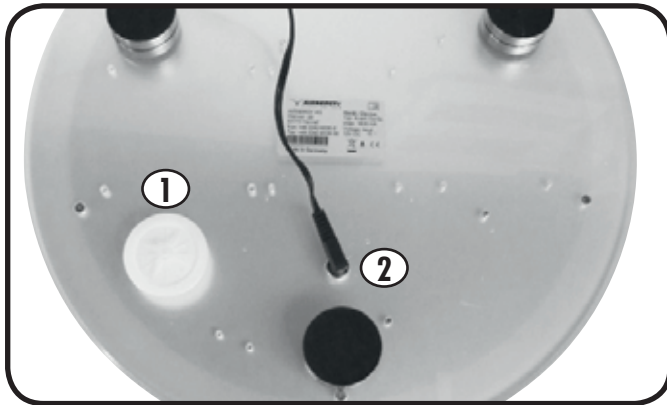
Since there is as yet insufficient feed-back available, you should only use AIRNERGY+ during pregnancy and breastfeeding after consulting your doctor.

If you have questions about the process or want to report your experiences or if you observe unwanted or adverse physical reactions that are not listed in this User Manual, please inform us immediately.

**We will be happy to help!**

### 3. STARTING UP THE DEVICE

#### Connecting the power supply and the air filter:



1) Connect air filter

2) Connect power supply

Connect the AIRNERGY+ device to the mains power supply via the mains adapter provided.

Push the round, white air filter into the air filter connection on the rear of the device turning it clockwise.

The air filter should be replaced every 50 hours. When an operating time of 50 hours is reached the "Change filter" message will automatically appear in the display of the AIRNERGY+ device indicating that the air filter should be replaced immediately.

#### Using the glass bottle

 Handle glass parts with due care and attention in order to avoid breakages and cuts.



Before using the device please rinse the glass bottle.

Fill the glass bottle with approx. 250 ml (max. half-full) of water which is deficient in lime.

**Correct insertion and connection of the glass bottle/sparkling element:**



Insert the glass bottle carefully into the device.



**Engaging:** Insert the plug of the sparkling element.

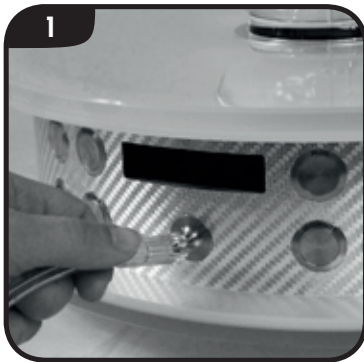


**Disengaging:** Remove the plug from the device by pulling on the white grips. Please do not pull directly on the tubes\*.

\*If the adapter gets stuck in, lightly grease the black annular seals, e. g. with Vaseline.

**Connecting and putting on the nasal cannula:**

(One nasal cannula should be used per individual.)



1 Connect the nasal cannula to the adaptor ...



2 ... place the nasal cannula on your nose...



3 ...and place the nasal cannula over your ears (left and right hand side).

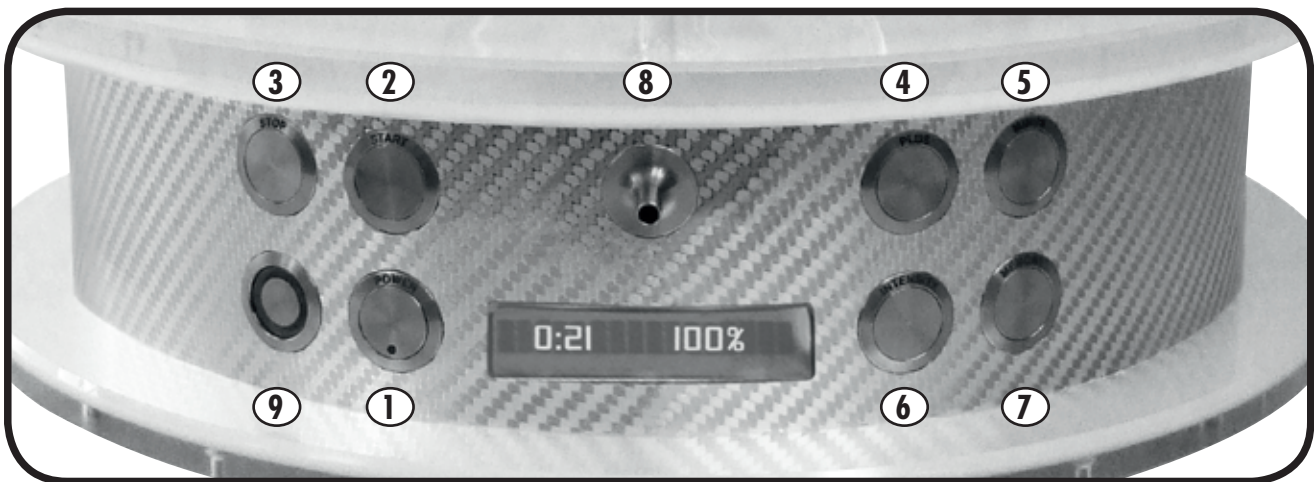


4 Use the ring to tighten the nasal cannula as required.



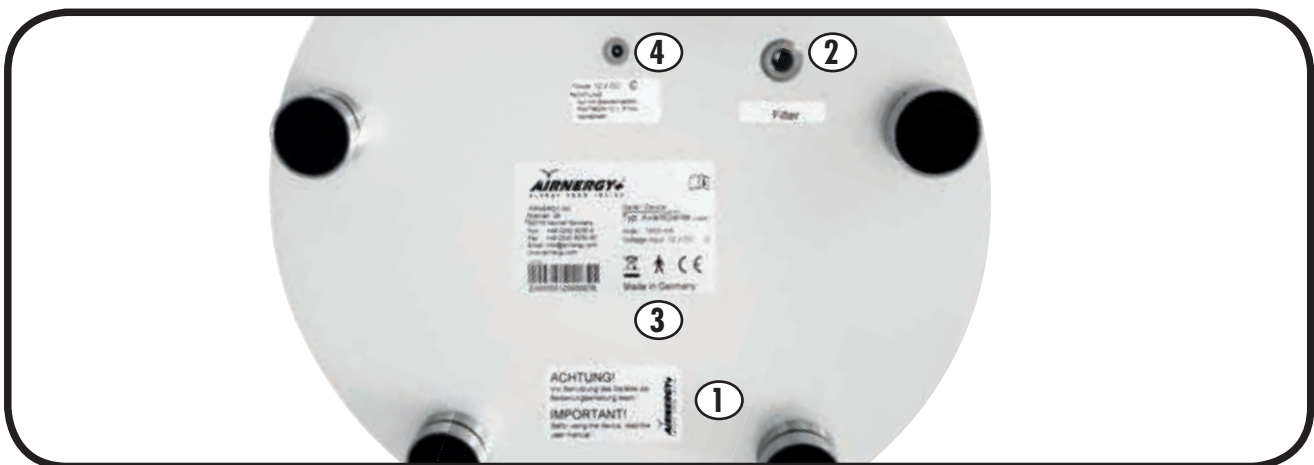
## 4. MANUAL OF THE DEVICE

### Control panel



- |                 |                     |                  |                                  |
|-----------------|---------------------|------------------|----------------------------------|
| 1) POWER button | 2) START button     | 3) STOP button   | 4) PLUS button                   |
| 5) MINUS button | 6) INTENSITY button | 7) MEMORY button | 8) Adaptor for the nasal cannula |

### Device - bottom view



- |                |                          |                |                         |
|----------------|--------------------------|----------------|-------------------------|
| 1) Information | 2) Socket for air filter | 3) Model plate | 4) Connect power supply |
|----------------|--------------------------|----------------|-------------------------|



Waste disposal according to WEEE ElektroG Put into circulation after August 2005



Sign of the European Community



Protection for electric shock



ISO 7000-164

Please read user manual



## 4.1. Turning on the device and starting normal operation



Press **POWER** button

The following message appears:

Self-test

The self-test function runs for a few seconds. The device is supplied with a standard setting.

When the following message appears, the device is ready for use:

0:21 100%

The display always shows the last stored memory setting.

## 4.2. Adjusting the application time



Press **PLUS** button

To increase the application time, in Operational Mode<sup>1</sup> press the PLUS button until you reach the required application time.



Press **MINUS** button

To reduce the application time, press the MINUS button until you reach the required application time.

## 4.3. Adjusting the intensity



Press **INTENSITY** button

In Operational Mode<sup>1</sup> you can select between three intensity levels: 50%, 75% and 100% by pressing the INTENSITY button until you reach the required setting.

## 4.4. Storing the application time and intensity settings



Press **MEMORY** button

To store your settings press the MEMORY button and an exclamation mark will appear briefly on the right-hand side of the display to confirm that the values have been stored. (You can only store your settings from Operational Mode<sup>1</sup>)

<sup>1</sup> Operational Mode: Press the POWER button in Standby-Mode and the device starts a self test. It is then in Operational Mode.

#### 4.5. Starting the application



Press **START** button

The application time appears on the display.  
The time runs down.

---

#### 4.6. Stopping the application



Hold down **STOP**  
button for 2 secs  
or  
Press **STOP** button 2x

The application time is stopped. The following message appears:

-----END-----

After stopping the application the pump continues to operate for approximately 1 minute to remove residual moisture from the system.

---

#### 4.7. Interrupting the application time (pause)



Press **STOP** button

The application is briefly interrupted and can be continued again by pressing the **START** button. The remaining application time is shown on the display.

---

#### 4.8. Application time has expired or was stopped

A brief acoustic signal sounds when the application time has expired or has been interrupted. This can be switched off if required (see 5.7. p. 14). The following message appears on the display:

-----END-----

After a brief run-on the device is again operational.  
The application can be resumed by pressing the **START** button.

---

#### 4.9. Switching off the device

Press the **POWER** button to turn the device off. It is then in Standby-Mode<sup>2</sup>.

---

#### 4.10. Automatic shut down

If the device is not operated for a period of 15 minutes after the brief run-on time, it automatically switches itself into Standby-Mode<sup>2</sup>.

---

<sup>2</sup> Standby-Mode: The mains adaptor is connected to the wall socket and the device. The Standby LED is blue. Press **POWER** button to switch from Standby-Mode to Operational.

## 4.11. Continuous application

### > Adjusting the continuous application:



Keep **PLUS** button pressed for a sustained period

The value in the display increases to the maximum of 99:59.

99:59 100%



Keep **PLUS** button pressed again for ca. 2 seconds

The device is now switched to continuous mode:

⌵ : CONT .

If you wish to store this setting, continue reading from point 4.4. Otherwise this setting will be lost when restarting the device.

### > Starting the continuous application:



Press **START** button

The following message appears:

⌵ : CONT .

Another colon appears. It flashes once a second and indicates that the device is in operation.

: ⌵ : CONT .



Press **STOP** button

The application is interrupted. The colon is no longer flashing.



Press **START** button

The application continues. The colon starts to flash again and indicates that the device is in operation.

### > Exiting the continuous application:



Keep **MINUS** button pressed down continuously

The following message appears:

: ⌵ : CONT .

The value on the display falls again until reaching the desired amount.

00:21 100%

If you wish to save this setting, continue reading from point 4.4. Otherwise this setting will be lost when restarting the device.

## 5. SERVICE FUNCTIONS

### 5.1. Display the air filter operating time

To display the remaining operating time of the filter, press the following combination of buttons in Standby-Mode:



Press **START & PLUS** buttons simultaneously

The operating time of the filter is displayed, e. g.:

Filter 6:14

The device switches itself on after 1 minute.

---

### 5.2. Maximum air filter operating time reached (after 50 hours)

When the air filter operating time of 50 hours has been reached, the following message appears when the device is switched on via the POWER button:

Changing Filter!

Press the POWER button again to initiate the self-test (see point 4.1.), then the device can be started. It is recommended that the filter is changed as soon as possible.

---

### 5.3. Changing the air filter (after 50 hours)

Please replace the air filter on the rear side of the device.

To reset the air filter operating time to 50 hours again, press the following buttons in Standby-Mode:



Press **POWER** button

The following message appears:

Changing Filter!

---



Press **STOP + PLUS + MINUS** buttons simultaneously

The following message appears:

Changed

The air filter time is now reset to 50 hours.

---



Press **START** button

To start the application press the START button.

## 5.4. Reminder: "Service-Check 2000" due in 50 hours

After an operating period of 1949 hours the following message appears in the display when the device is switched on via the POWER button:

SERVICE 50 hours!



Press **POWER** button

Press the **POWER** button again to initiate the self-test (see point 4.1.) and then the device can be started.

It is recommended that the device is sent back for a "Service-Check 2000" to the manufacturer soon.

## 5.5. Warning: "Service-Check 2000" now due

After an operating period of 1999 hours the following message appears in the display when the device is switched on via the POWER button:

SERVICE !



Press **POWER** button

Press the **POWER** button again to initiate the self-test (see Point 4.1.) and then the device can be started.

A "Service-Check 2000" should be carried out by the manufacturer immediately.

## 5.6. Selecting language

To change the language, press the following combination of buttons in Standby-Mode:



The currently set language appears in the display

English

Press **START- & INTENSITY** buttons simultaneously



Press **PLUS** button

By pressing the **PLUS** button you can choose between various languages, e. g.:

German

The language shown on the display will automatically be taken over after one minute, or ...



... Press **POWER** button

Press the **POWER** button to store the language setting and initiate the self-test (see point 4.1.) and then the device can be started.

## 5.7. Setting acoustic signal volume

To change the volume of the acoustic signal, press the following combination of buttons in Standby-Mode:



Press **START & MEMORY** buttons simultaneously

The display always shows the last stored volume setting.  
e. g.:

Signal OFF



Press **PLUS** button

You can choose between different volume settings by pressing the PLUS button, e. g.:

Signal LOW

or

Signal HIGH

or

Signal OFF

The setting shown on the display will automatically be taken after one minute, or...



... Press **POWER** button

Press the **POWER** button to store the acoustic signal setting and initiate the self test (see point 4.1.) and then the device can be started.

---

## 5.8. Error messages

**SO error** - one or more activation units/catalysts are not working or not working properly. Pull out the plug. After 10 seconds reconnect the mains adaptor to the device and switch on. If the error message still appears, contact your local distributor or Airnergy AG.

**LOW Voltage** - The voltage at the device input is less than 9 volts.

**HIGH Voltage** - The voltage at the device input is greater than 14 volts.

Check to make sure you are using the correct mains adaptor. Either the mains adaptor is faulty or there are currently fluctuations in the electricity network. Pull out the plug. After 10 seconds reconnect the mains adaptor to the device. If the error message still appears, contact your local distributor or Airnergy AG.

## 5.9. Troubleshooting list (fault diagnosis)

**Display does not light up** – There may be various causes for this.

Please check whether the blue light of the standby LED is lit up. If it is lit up and the display does not switch on after pressing the POWER button but the device is otherwise functioning normally, then the display is faulty. Please contact your local distributor or Airnergy AG immediately.

If the standby light is not on, check that the originally supplied mains adaptor is properly connected at the socket and the mains adaptor plug is properly connected to the device.

Should the fault still not be rectified, check that the country adaptor of the mains adaptor is properly engaged in the mains adaptor and that there isn't a loose contact (see also page 17 of the User Manual: Notes on correct usage of the mains adaptor).

There might also be a broken or torn wire in the mains cable resulting in power variations when it is incorrectly positioned. Should the display still fail to come on after these checks, check that the socket to which the power supply is connected is working by testing another electrical device in this socket.

If the display still fails to come on, contact your local distributor or Airnergy AG immediately.

**Faulty LEDs in the glass bottle well** – If one or more of the blue LEDs underneath the glass bottle is/are faulty, this does not affect the functioning of the device. They can, however, be replaced, if you wish. Please contact your local distributor or Airnergy AG immediately.

**Faulty mains adaptor** – should the green light on the mains adaptor fail to come on after plugging into the mains socket, check whether the country adaptor of the mains adaptor is correctly engaged in the mains adaptor and that there isn't a loose contact (see also page 17 of the User Manual: Notes on correct usage of the mains adaptor).

If the green light is on but the device is not functioning, please read the first point "**Display does not light up**" above.



## 6. LOOKING AFTER THE DEVICE

Clean the device with a soft, slightly damp cloth.

**Do not use solvents!**

- The water in the glass bottle should be changed directly before use.
- The foil keyboard should only be wiped clean using a slightly damp cloth; if necessary use a mild soap solution.

 • Ensure that the glass bottle and sparkling element are clean when used.

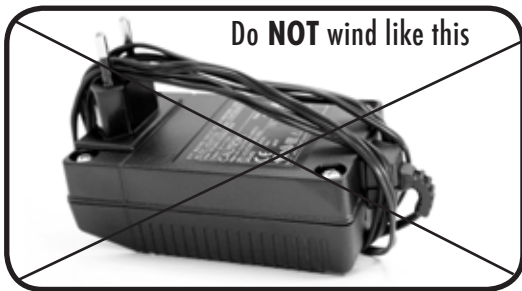
- Any residues (e. g. lime scale) in the glass bottle or the sparkling element can be removed using dilute acetic acid. Fill the glass bottle with 50 % water and 50 % acetic acid and leave the solution to act overnight. Then rinse carefully with plenty of clean water. Make sure that no water gets into the tubes of the sparkling element!
- The air filter on the rear of the device should be replaced after the specified time.  
(The message: "Change filter!" appears in the display)
- If the air filter is very dirty (dark grey), replace it before the recommended 50 hours have expired.  
You can obtain a replacement filter from Airnergy AG.
- If the device is not used for a longer period of time please empty the glass bottle completely and place the sparkling element on clear and absorbent kitchen paper. Make sure that no water gets into the tubes of the sparkling element!
- To avoid mould the sparkling element should only be inserted back to the empty glass bottle after it was dried completely.

 **How to use the mains adaptor correctly**



**Rolling up the cable**

The cable should be rolled up loosely at a few centimetres in front of the cable end moulding.



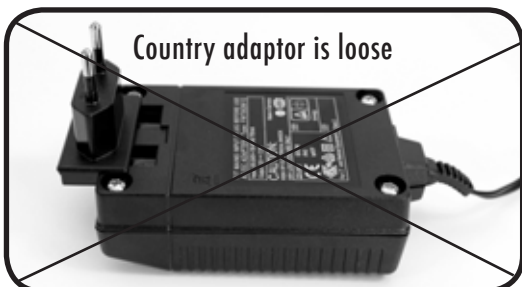
Do **NOT** wind like this

Do not wind the cable tightly around the mains adaptor. This often causes the cable moulding to be bent and this can break or damage the wires.



**The country adaptor**

Always push the country adaptor up to the stop in the mains adaptor until it snaps into place.



Country adaptor is loose

If the mains adaptor is not pulled out of the socket correctly, the country adaptor can become loose or come out of its notch.

## 7. SERVICE-CHECK 2000

When the "Service!" message appears in the display after 2,000 hours of operation, send the device to Airnergy AG to carry out a "Service-Check 2000" service. Proper operation of the device can only be guaranteed, if this is done.

If possible, pack the device in the original packaging and send it to our company address mentioned at the last page of this User Manual. Our employees will make every effort to return the maintained device to you as quickly as possible.

 Take care to pack the glass components so that they do not break.

---

## 8. TECHNICAL DATA: DEVICE

Power supply	12 VOLT DC
Power supply unit	out: 2.5 A
Power consumption	I <sub>max</sub> = 1,600 mA
Operating mode	direct current
Air supply	approx. 4 l per minute
Dimensions (mm) incl. glass bottle	350 x 312 (Ø x H)
Weight	6,9 kg

---

## 9. TECHNICAL DATA: POWER SUPPLY

Mark of Origin	Made in Germany
Manufacturer	FRIWO Gerätebau GmbH
Typ	FW7362M/12
Connection to the supply	100-240 V
Supply frequency	50-60 Hz
Power consumption	FW7362M/12: 700 mA

## 10. ACCESSORIES



Nasal cannula  
(Art.-No. 1005255)



Glass bottle incl. Sparkling element  
(Art.-No. 1010255)



Air filters, 2 pcs  
(Art.-No. 1020156)



Power supply  
(Art.-No. 1033355)



Cannula bag  
(Art.-No. 4017055)



optional  
Headset Diffuser  
(Art.-No. 1007055)



optional  
Aroma bottle  
(Art.-No. 1011055)



optional  
Aroma bottle storage  
(Art.-No. 1012255)

### Aroma therapy



**Aroma bottle support, front**  
Stainless steel support for the aroma bottle at the front of the device.

#### Attention!



When using essential oils with the aroma bottle, please note that essential oils can corrode plastics (device housing). Never add aromatherapy oils to the bottle with the sparkling element or attach the aroma bottle to the air filter. This may result in considerable damage to the catalysts.

## 11. ISO-CERTIFICATES

Download certificates: [www.certificates.airnergy.com](http://www.certificates.airnergy.com)



**AIRNERGY AG**

Wehrstr. 26

53773 Hennef • Germany

Fonl: +49 (0)2242 - 9330 - 0

Fax: +49 (0)2242 - 9330 - 30

e-mail: [info@airnergy.com](mailto:info@airnergy.com)

[www.airnergy.com](http://www.airnergy.com)